




# Coastal Lifestyle

COLLECTION



**Ritz-Craft**  
CUSTOM HOMES



# Coastal Lifestyle

COLLECTION



*My Hero*



*My Perfect Day*

*My Coastal home...*

*is a reflection of my style,*

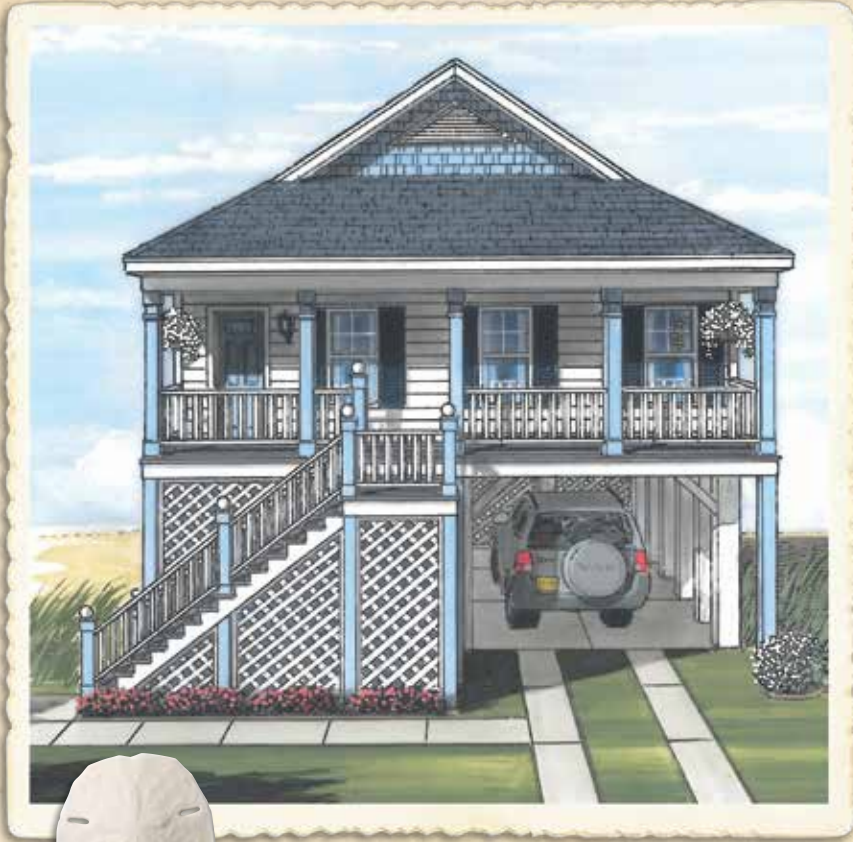
*an extension of my dreams, and*

*a frame for the portrait of my life.*



*My Neighborhood... My Home*





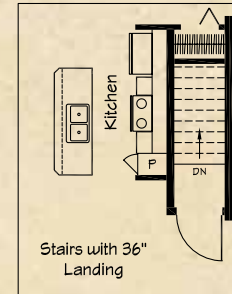
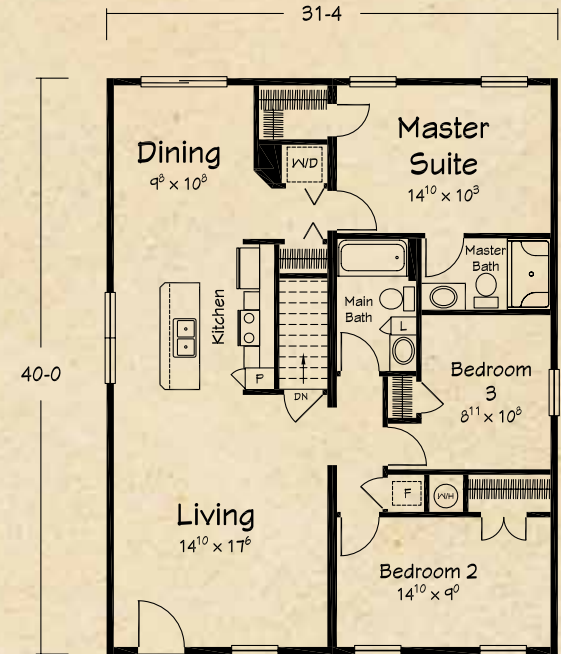
Shown with site-built front porch.

# the Bayville RANCH PLANS

The compact Bayville plans can make the most of a smaller home site. The wide open floor plan is great for entertaining and provides access to front porch or rear deck views.

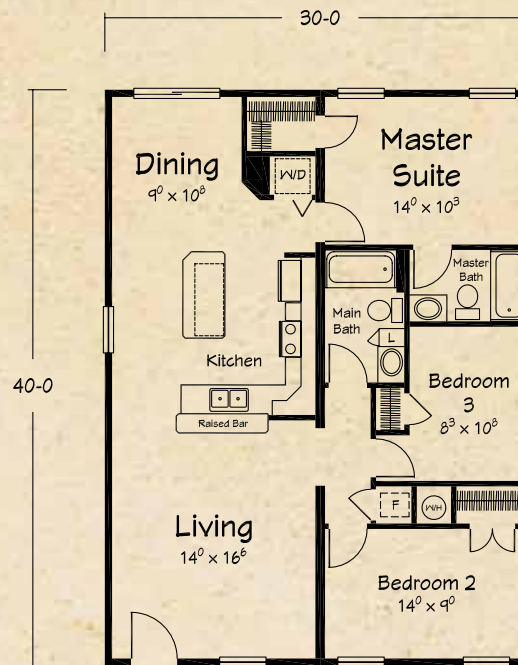
## Bayville II

1253 sq. ft. Living Area



## Bayville I

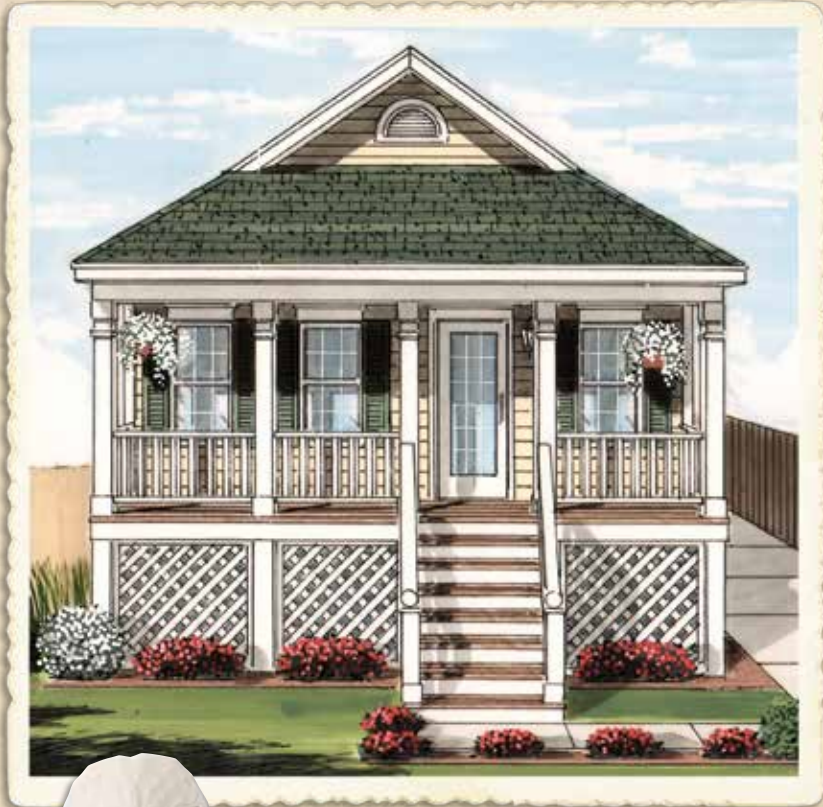
1197 sq. ft. Living Area



- 3 Bedrooms
- 2 Full Baths

Artist renderings depict homes as they may be built on a typical site. Renderings may include optional or site installed features. Refer to Ritz Craft's standard "Benchmark Specifications" and be sure to thoroughly discuss all aspects of your building project with your selected homebuilder.





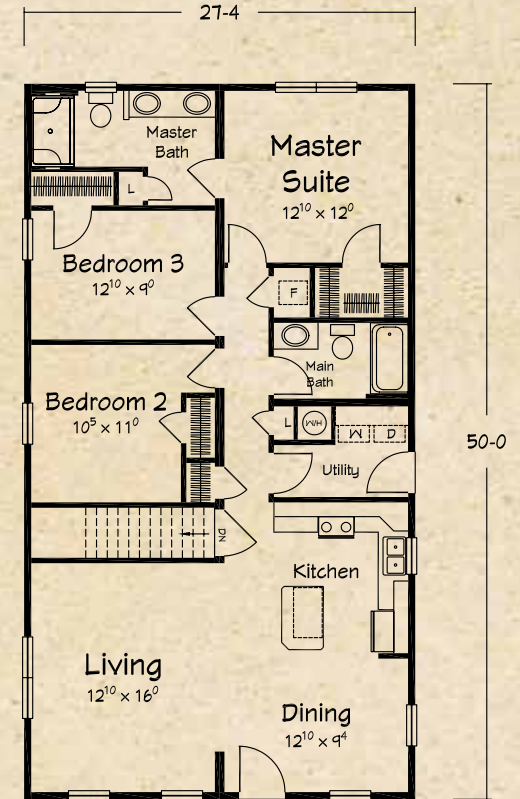
*Shown with site-built front porch.*

## the Bayside Retreat PLANS

*The Bayside plans are designed to make the most of sites with a view from the front porch. The open, front-facing great room ties nicely into the outdoor space.*

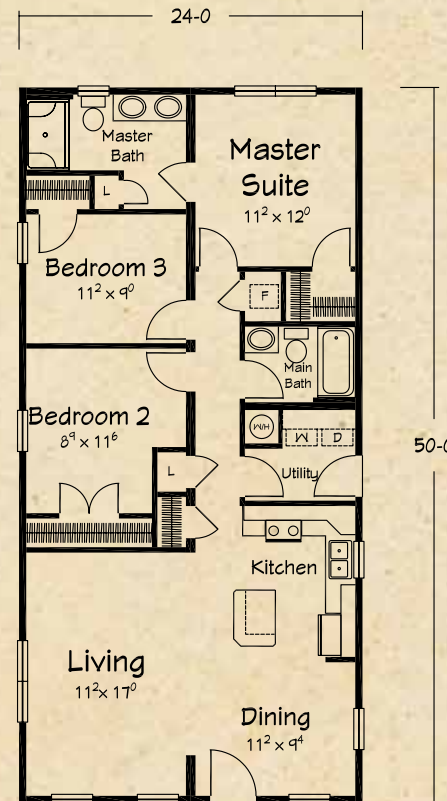
### Bayside II

1366 sq. ft. Living Area



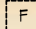
### Bayside I

1200 sq. ft. Living Area



- 3 Bedrooms
- 2 Full Baths

Floor plan exterior dimensions and interior room sizes are accurate, but may have been "rounded" for brochure plans. Always refer to Ritz Craft provided prints for actual dimensions.

 symbol denotes optional furnace/air handler location.

[www.Ritz-Craft.com](http://www.Ritz-Craft.com)



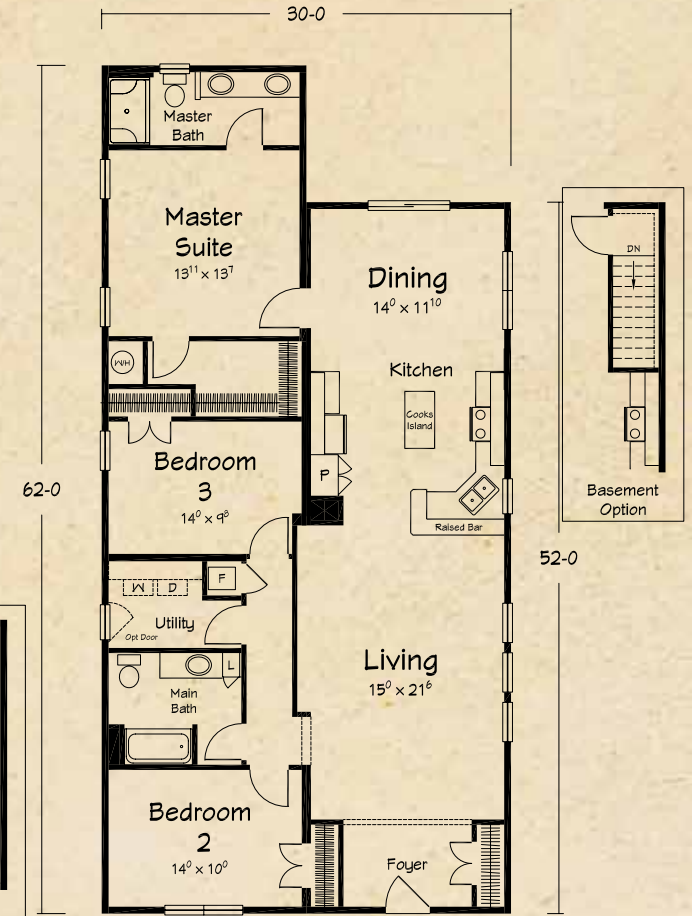
Shown with site-built front porch.

# the Harbor View BUNGALOW PLANS

*The cute and functional Harbor View plans offer wide open living space for gatherings and nicely secluded bedroom areas. Just add family and friends.*

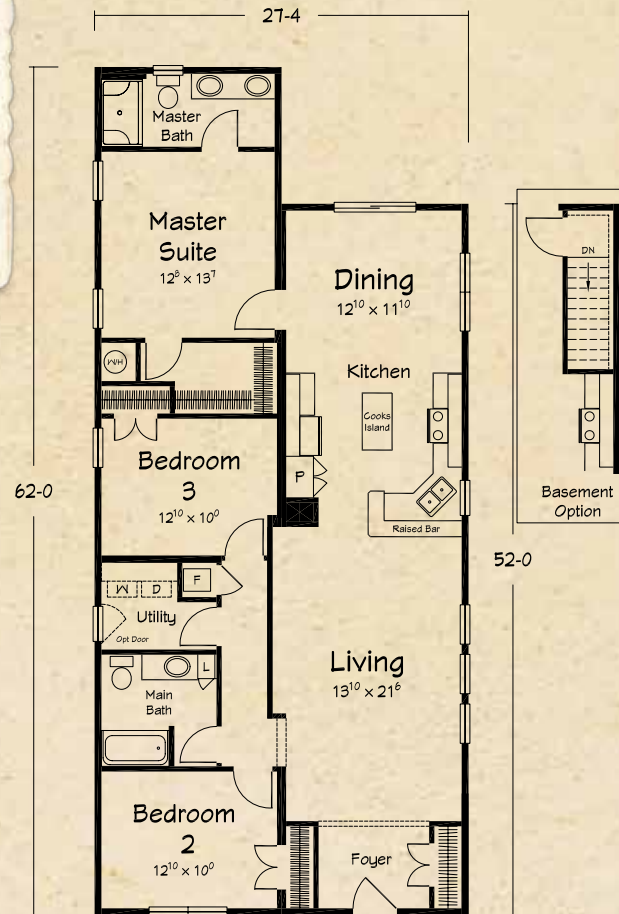
## Harbor View III

1705 sq. ft. Living Area



## Harbor View II

1558 sq. ft. Living Area



- 3 Bedrooms
- 2 Full Baths

Artist renderings depict homes as they may be built on a typical site. Renderings may include optional or site installed features. Refer to Ritz Craft's standard "Benchmark Specifications" and be sure to thoroughly discuss all aspects of your building project with your selected homebuilder.





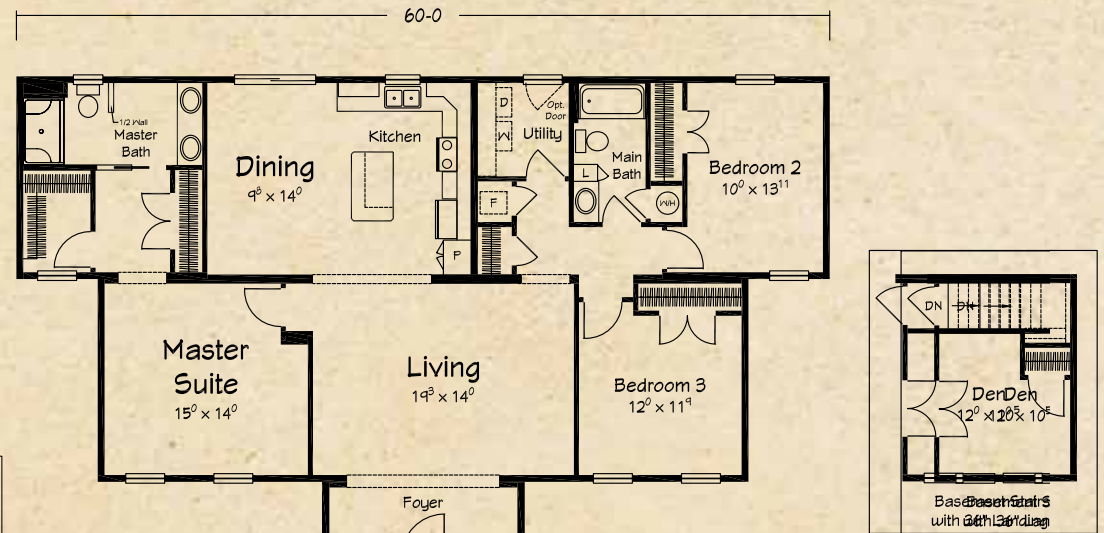
# the Acadian RANCH PLANS

*Classic lines and balance make the Acadian style home a timeless favorite. Your site added porch can tie nicely into the foyer's roofline to add a nice covered entry and some outdoor space.*

Shown with site-built front porch.

## Acadian III

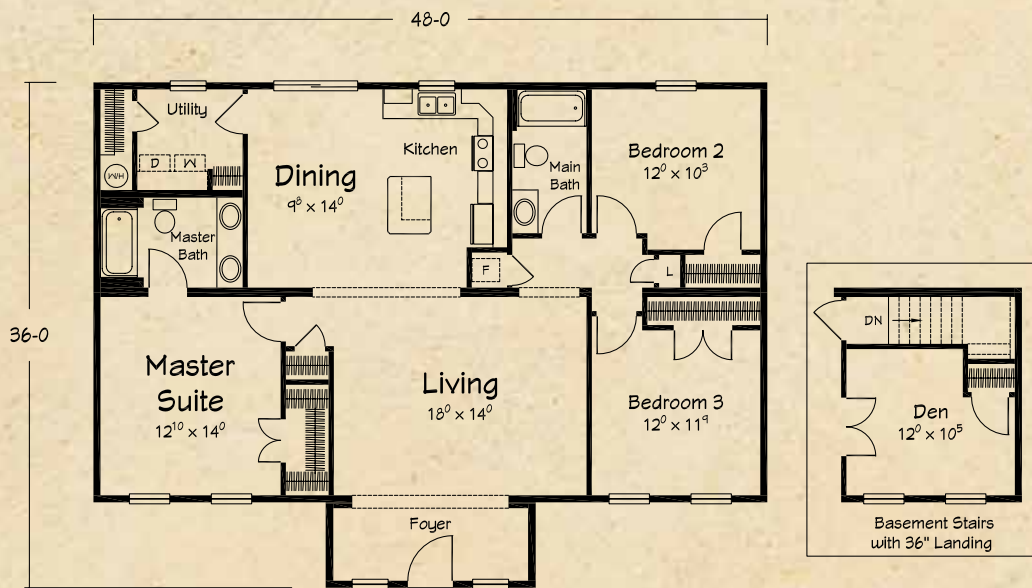
1708 sq. ft. Living Area



- 3 Bedrooms
- 2 Full Baths

## Acadian II

1527 sq. ft. Living Area



Floor plan exterior dimensions and interior room sizes are accurate, but may have been "rounded" for brochure plans. Always refer to Ritz Craft provided prints for actual dimensions.

symbol denotes optional furnace/air handler location.

www.Ritz-Craft.com



*Shown with optional hip roof extended to cover site-built front porch.*

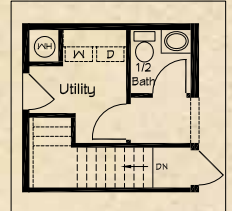
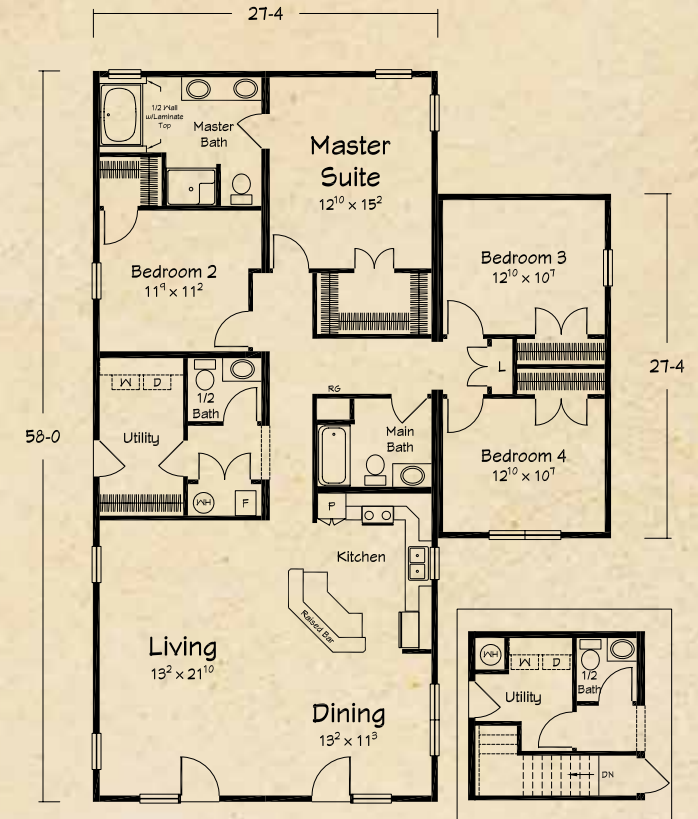
# the Dauphin Island PLANS

*The classic "get-away" home that you'll want to live in every day. Elegant double doors lead to a wide-open front great room area. Large bedrooms with nice closet space round out these plans.*

Artist renderings depict homes as they may be built on a typical site. Renderings may include optional or site installed features. Refer to Ritz Craft's standard "Benchmark Specifications" and be sure to thoroughly discuss all aspects of your building project with your selected homebuilder.

## Dauphin Island III

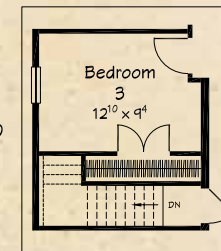
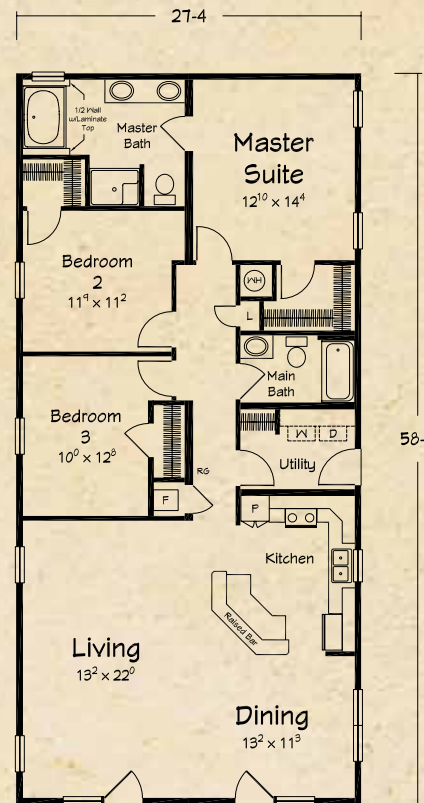
1958 sq. ft. Living Area



Dauphin Island III Basement Option

## Dauphin Island II

1585 sq. ft. Living Area



Dauphin Island II Basement Option  
(Reduces Living Rm to 20'-7"  
Reduces Br2 to 10'-0")

- 3-4 Bedrooms
- 2-2½ Full Baths





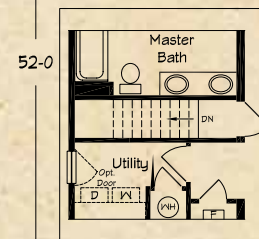
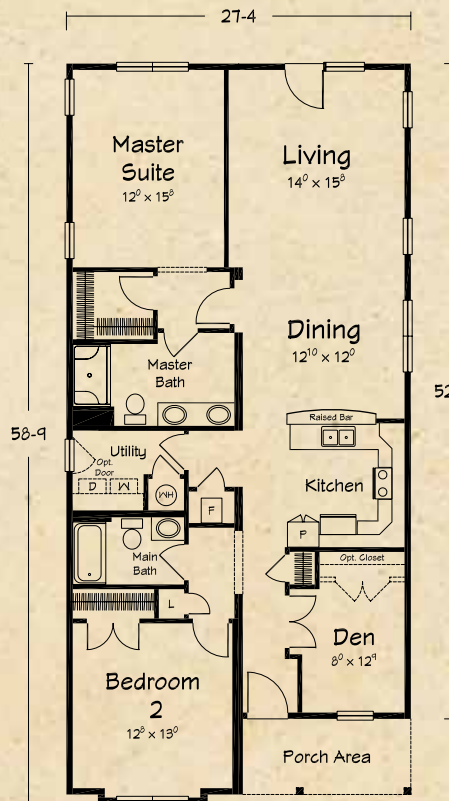
Shown with integral porch area and optional hip roof.

# the Daybreak Cottage PLANS

*This unique design provides front entry from the street side and also allows for great, rear facing views from the main living areas and from the master bedroom. The design of the Daybreak Cottage will allow you to take full advantage of the special views from your home site.*

## Daybreak II

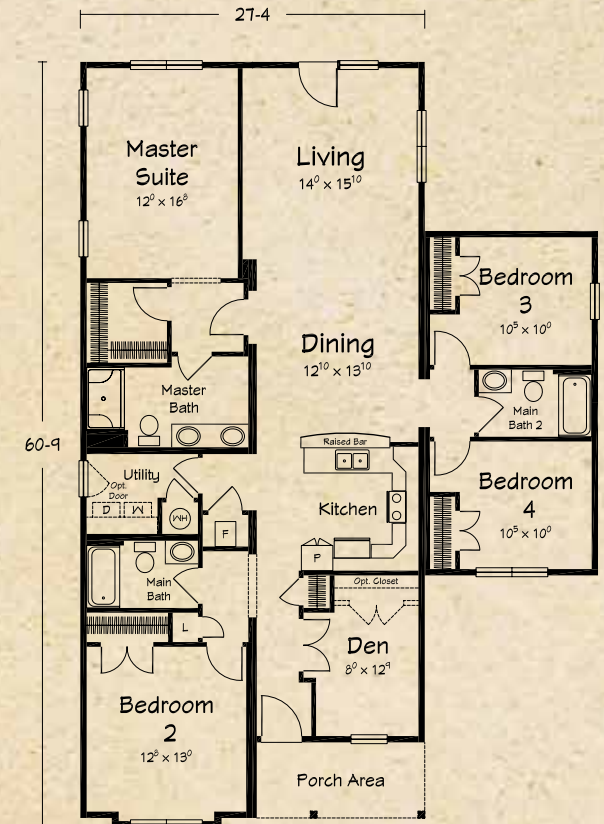
1512 sq. ft. Living Area  
80 sq. ft. Porch Area



Daybreak II  
Basement Option  
(Reduces MBrm to 14'-0"  
Reduces Br 2 to 11'-10")

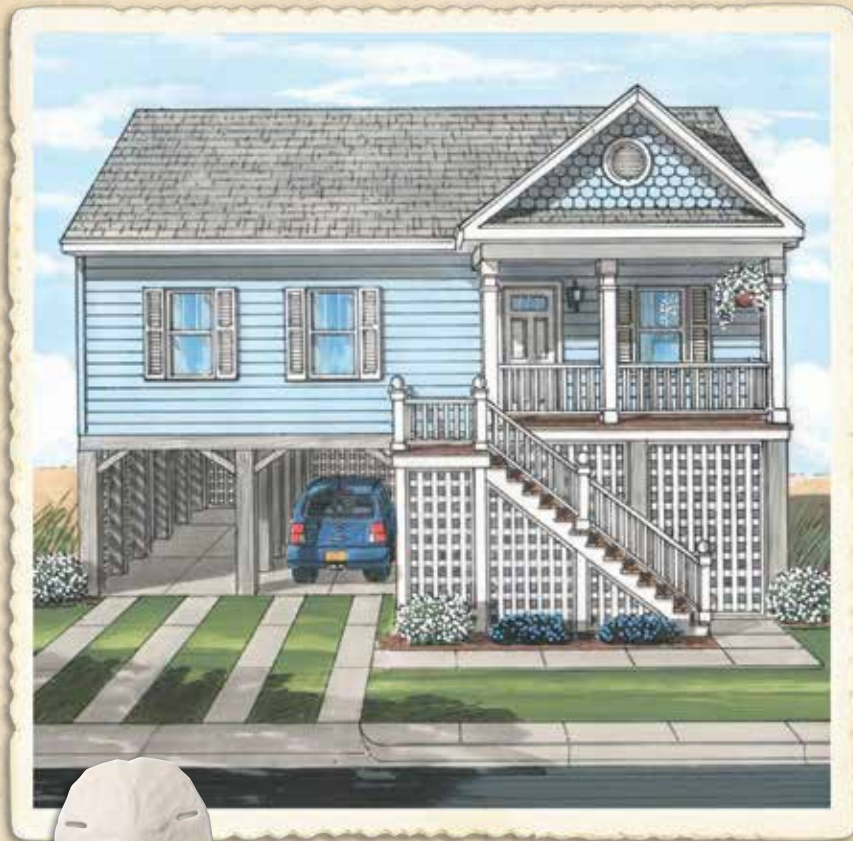
## Daybreak III

1943 sq. ft. Living Area  
80 sq. ft. Porch Area



- 3-5 Bedrooms
- 2-3 Full Baths





*Shown with site-built front porch.*

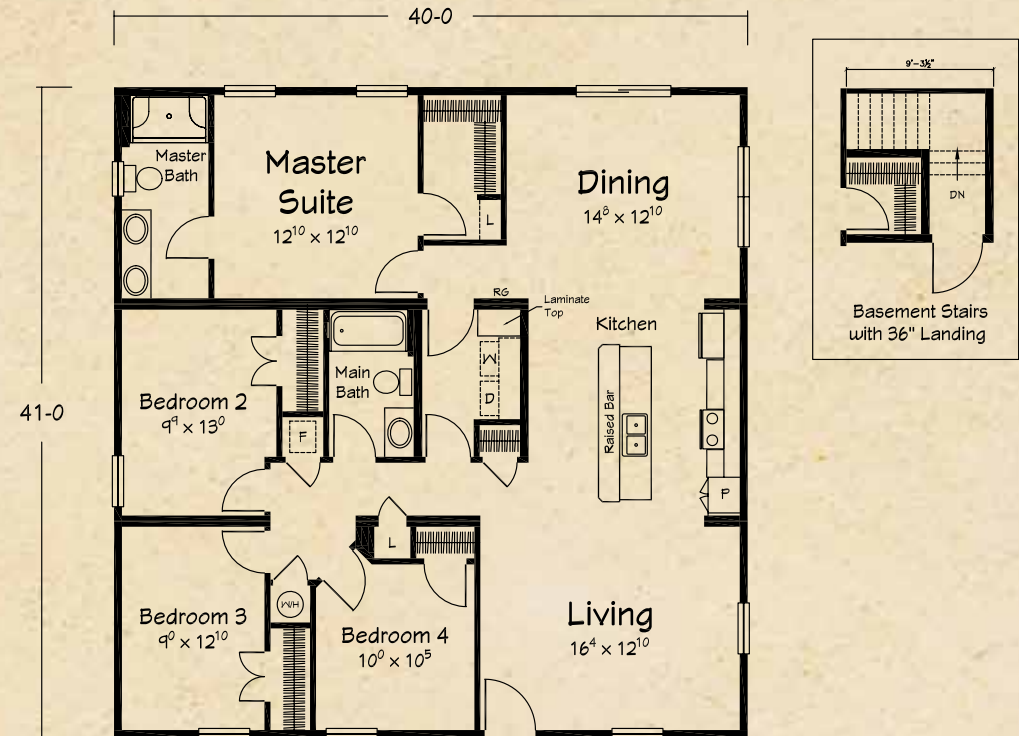
## the **Sailview I RANCH**

*Need four bedrooms in a single level home?*

*The Sailview may be the perfect plan for your family! You'll all enjoy the Sailview's open and functional design.*

### Sailview I Ranch

1643 sq. ft. Living Area



- 4 Bedrooms
- 2 Full Baths



Shown with integral porch area.

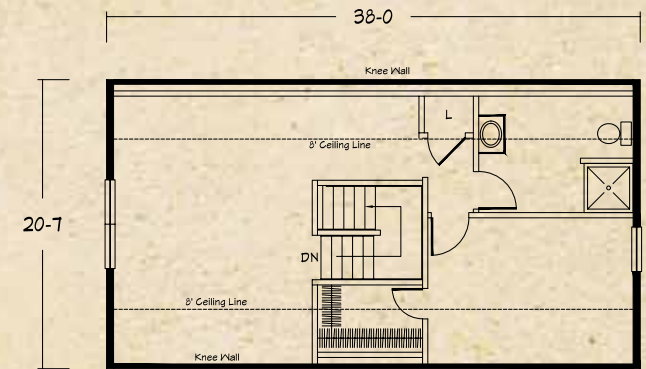
## the Cute Cottage II BONUS RANCH

*The name says it all and “cute works”. This open floor plan home can provide plenty of family living space or start out small and expand later. The Cute Cottage combines exterior curb appeal and interior livability within a “small footprint” design.*

### Cute Cottage II

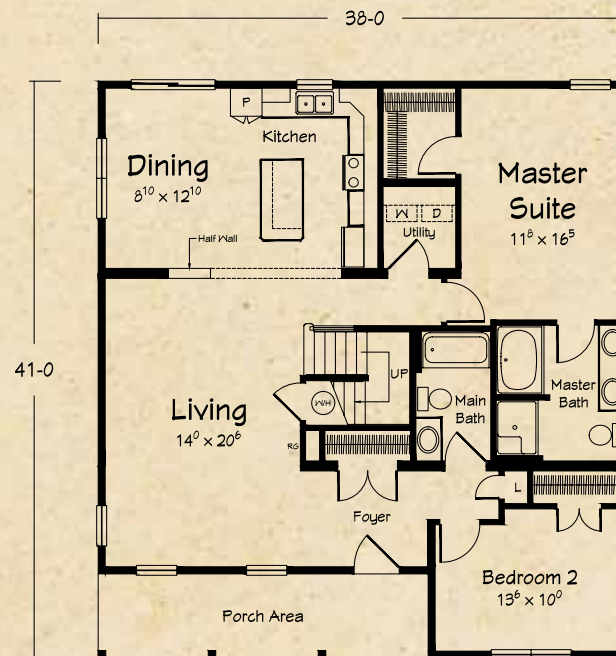
1402 sq. ft. Living Area  
156 sq. ft. Porch Area  
779 sq. ft. Proposed Upper Level

2337 Total Available



### Cute Cottage Proposed Upper Level

*\*Please note that the upper level area is designed for economical completion on-site. Refer to Ritz-Craft's BENCHMARK SPECIFICATIONS for included materials and discuss all aspects of completion with your selected homebuilder.*



- 2-3 Bedrooms
- 2-3 Full Baths

Floor plan exterior dimensions and interior room sizes are accurate, but may have been “rounded” for brochure plans. Always refer to Ritz Craft provided prints for actual dimensions.

**F** symbol denotes optional furnace/air handler location.

www.Ritz-Craft.com



*Shown with site-built front porch.*

## the Dolphin II CAPE

*This home has charm and style in an affordable, smaller design. Functional plan elements provide larger home features in this compact and comfortable plan.*

### Dolphin II Cape Proposed Upper Level

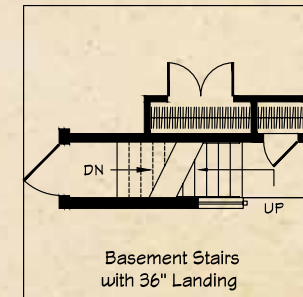
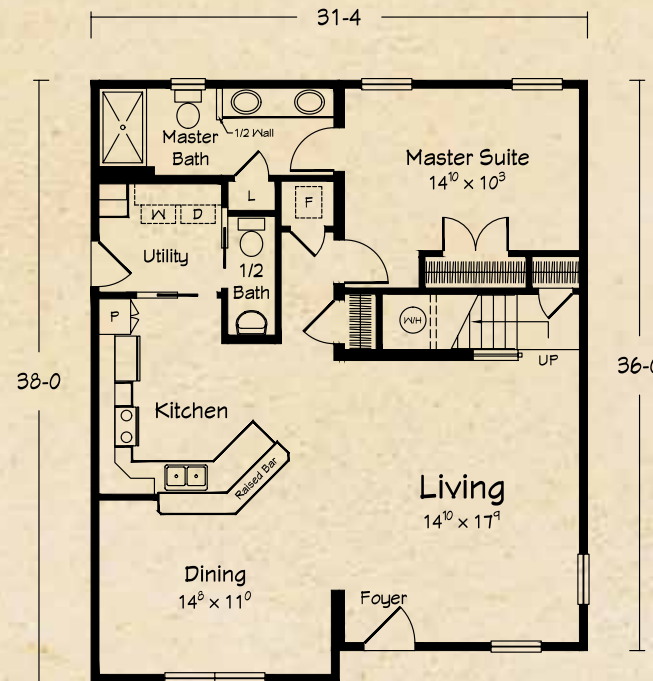
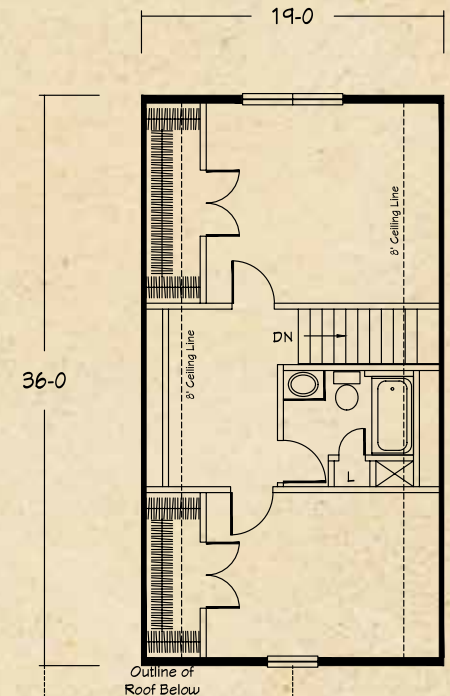
*\*Please note that the upper level area is designed for economical completion on-site. Refer to Ritz-Craft's BENCHMARK SPECIFICATIONS for included materials and discuss all aspects of completion with your selected homebuilder.*

### Dolphin II Cape

1159 sq. ft. Living Area  
684 sq. ft. Proposed Upper Level  

---

1843 Total Available



- 1-3 Bedrooms
- 1½-2½ Baths



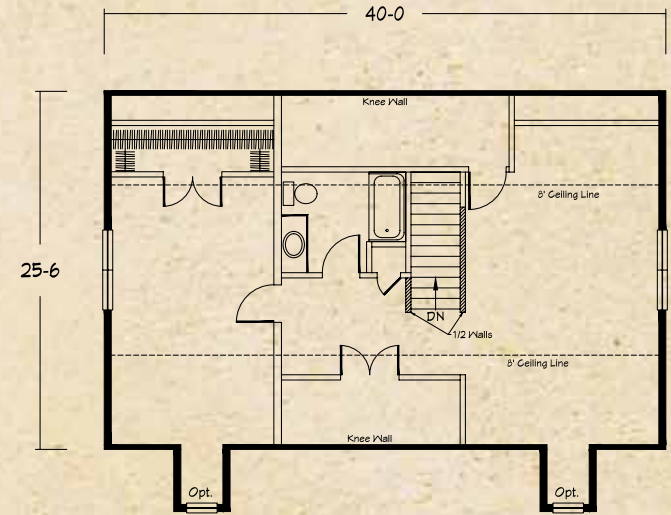
Shown with site-built front porch.

## the Sailview II CAPE

*This compact plan has cute exterior curb appeal coupled with an open, spacious interior layout. By site finishing the upper level, you can gain a fourth bedroom, huge loft room and lots of storage.*

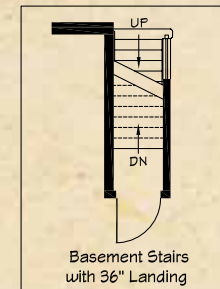
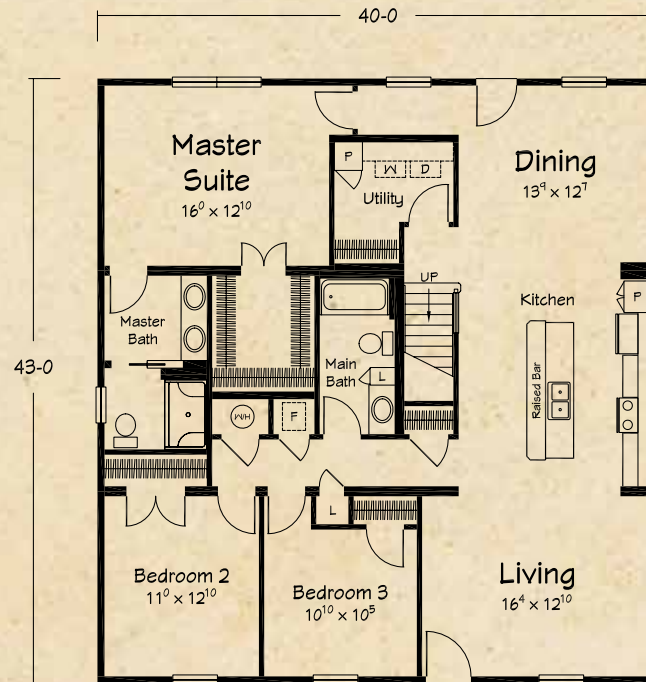
### Sailview II Cape

1720 sq. ft. Living Area  
 1020 sq. ft. Proposed Upper Level  
 2740 Total Available



### Sailview II Cape Proposed Upper Level

*\*Please note that the upper level area is designed for economical completion on-site. Refer to Ritz-Craft's BENCHMARK SPECIFICATIONS for included materials and discuss all aspects of completion with your selected homebuilder.*

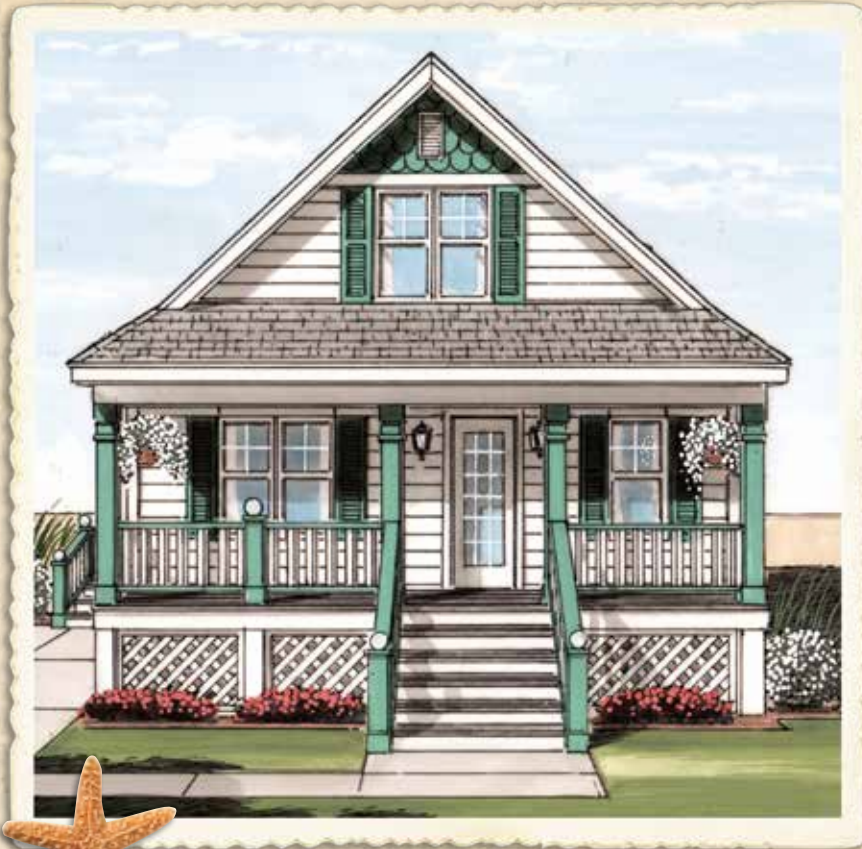


- 3-4 Bedrooms
- 2-3 Full Baths

Floor plan exterior dimensions and interior room sizes are accurate, but may have been "rounded" for brochure plans. Always refer to Ritz Craft provided prints for actual dimensions.

symbol denotes optional furnace/air handler location.

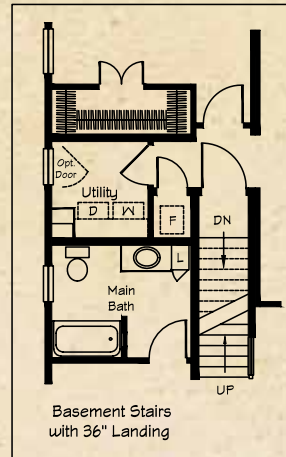
www.Ritz-Craft.com



Shown with site-built front porch.

## the Spinnaker II CAPE

The Spinnaker provides large home features within a small footprint. The open floor plan includes both formal and casual dining areas and large bedrooms with great closet space.

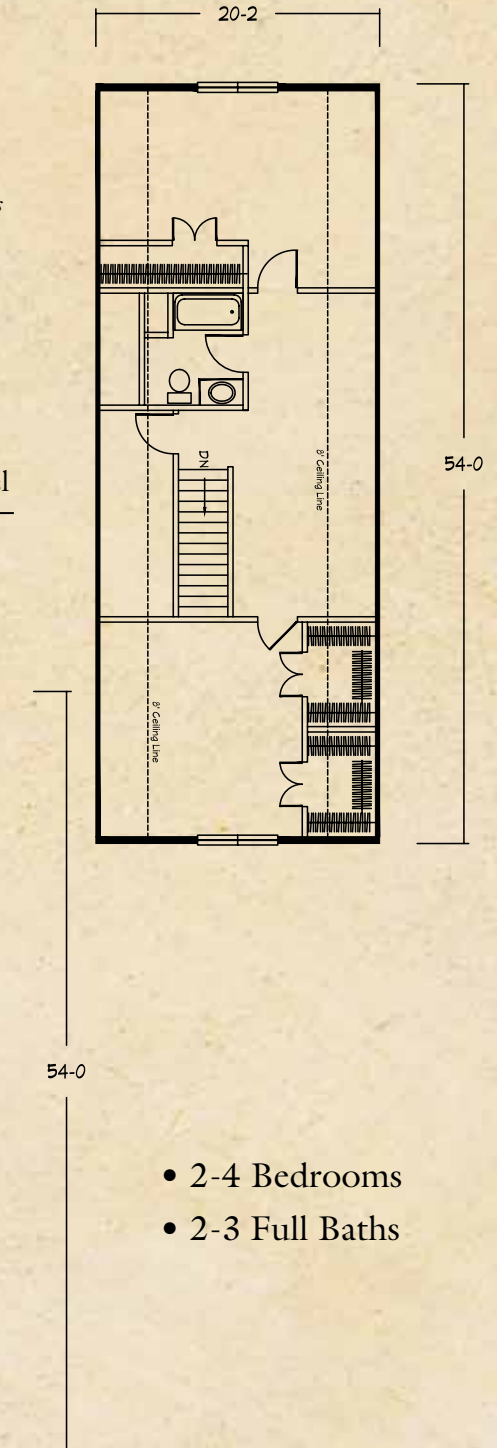
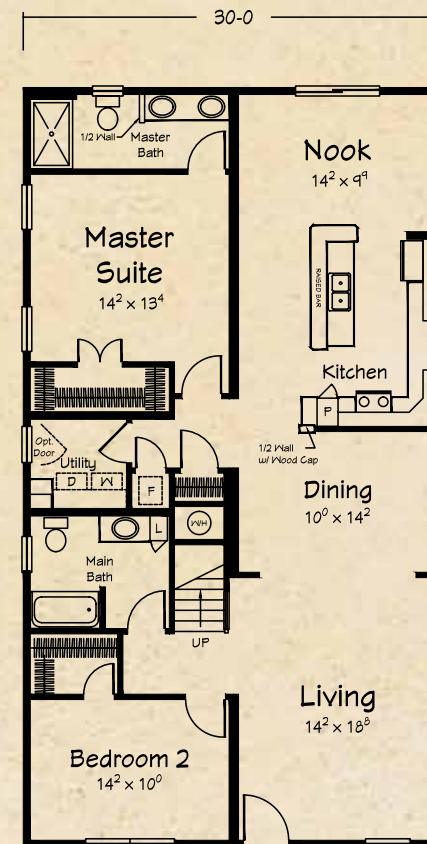


### Spinnaker II Cape Proposed Upper Level

\*Please note that the upper level area is designed for economical completion on-site. Refer to Ritz-Craft's BENCHMARK SPECIFICATIONS for included materials and discuss all aspects of completion with your selected homebuilder.

### Spinnaker II Cape

1615 sq. ft. Living Area  
1085 sq. ft. Proposed Upper Level  
2700 Total Available



- 2-4 Bedrooms
- 2-3 Full Baths

Artist renderings depict homes as they may be built on a typical site. Renderings may include optional or site installed features. Refer to Ritz Craft's standard "Benchmark Specifications" and be sure to thoroughly discuss all aspects of your building project with your selected homebuilder.





Shown with integral porch area.



## the Chandeaur II CAPE

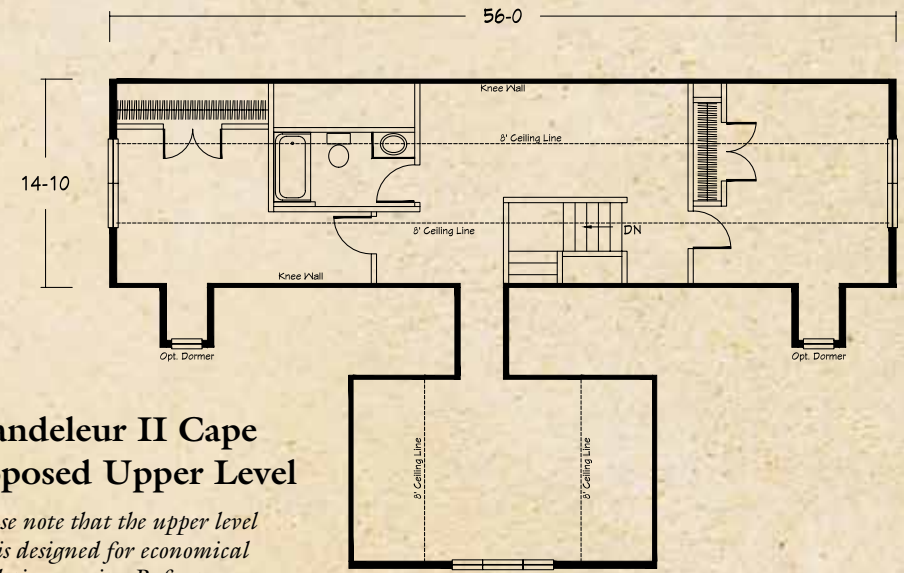
*This large family home's grand exterior blends Acadian and Craftsman elements for a unique transitional style. The broad front porch leads to an elegant foyer with views of this open and spacious plan.*

### Chandeaur II Cape

1794 sq. ft. Living Area  
 204 sq. ft. Porch Area  
 1156 sq. ft. Proposed Upper Level

---

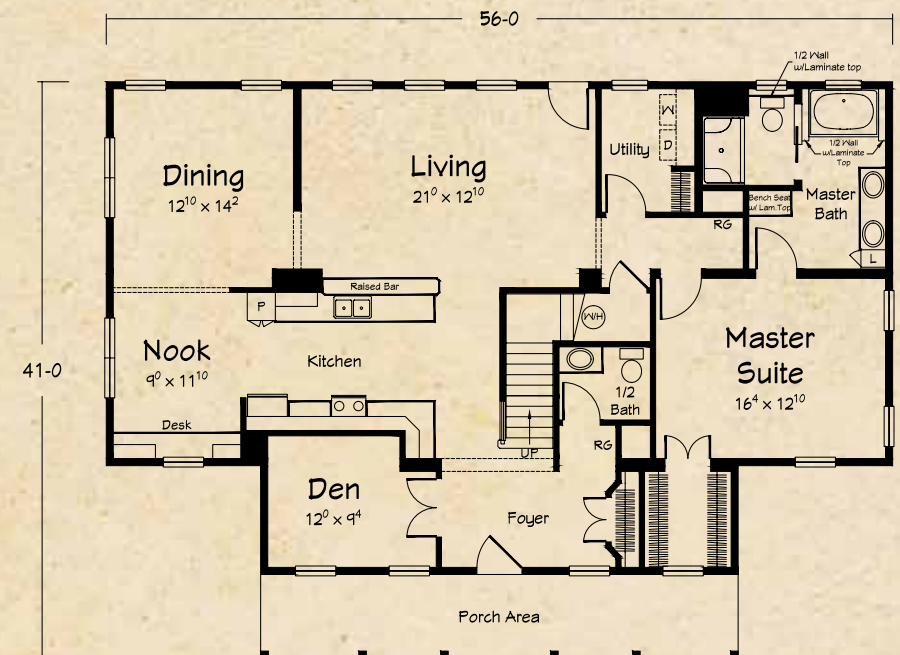
3154 Total Available



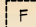
### Chandeaur II Cape Proposed Upper Level

*\*Please note that the upper level area is designed for economical completion on-site. Refer to Ritz-Craft's BENCHMARK SPECIFICATIONS for included materials and discuss all aspects of completion with your selected homebuilder.*

- 2-4 Bedrooms
- 1½-2½ Baths

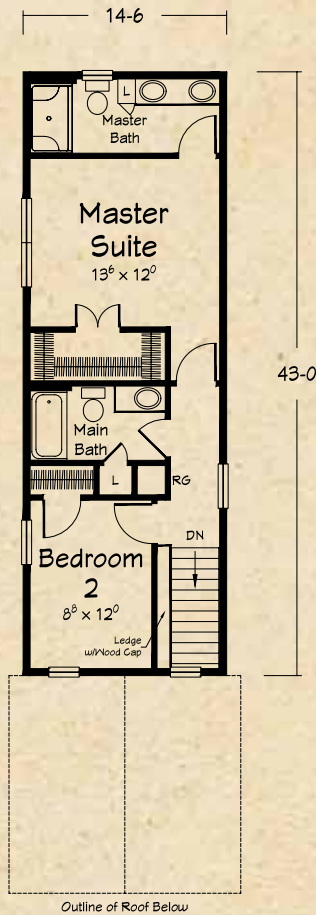


Floor plan exterior dimensions and interior room sizes are accurate, but may have been "rounded" for brochure plans. Always refer to Ritz Craft provided prints for actual dimensions.

 symbol denotes optional furnace/air handler location.

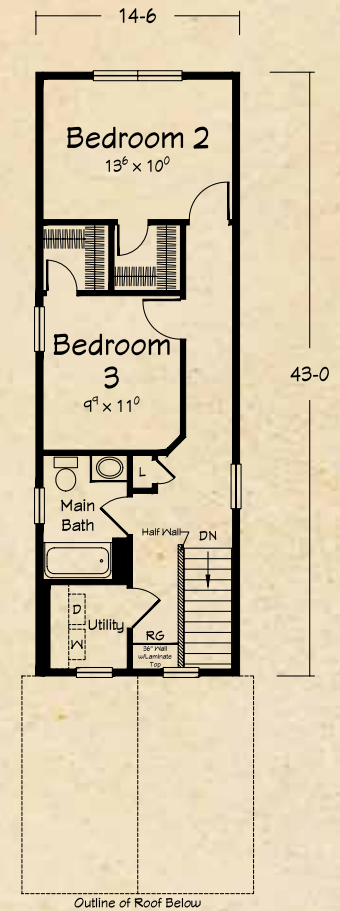
www.Ritz-Craft.com

**Serenity I  
Second Floor**



- 2 Bedrooms
- 2½ Baths

**Serenity II  
Second Floor**

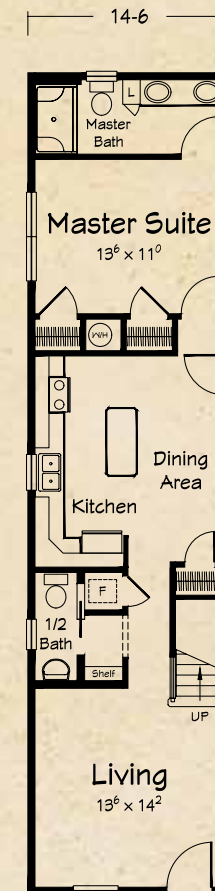
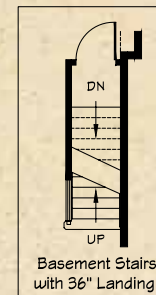
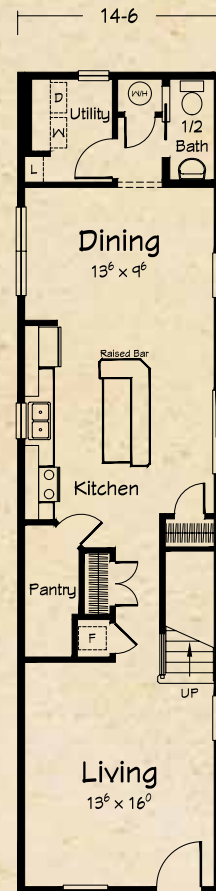


- 3 Bedrooms
- 2½ Baths

**Serenity I & II  
First Floor**

848 sq. ft. 1st Floor Living  
623 sq. ft. 2nd Floor Living

1471 Total Available



*Shown with site-built front porch and side deck.*

*the* **Serenity I &  
Serenity II  
TWO STORY  
PLANS**

*The Serenity plans are designed to be built on the narrowest of home sites.*

*These unique plans provide surprisingly large living spaces and can provide good access to your site added outdoor space.*

Artist renderings depict homes as they may be built on a typical site. Renderings may include optional or site installed features. Refer to Ritz Craft's standard "Benchmark Specifications" and be sure to thoroughly discuss all aspects of your building project with your selected homebuilder.



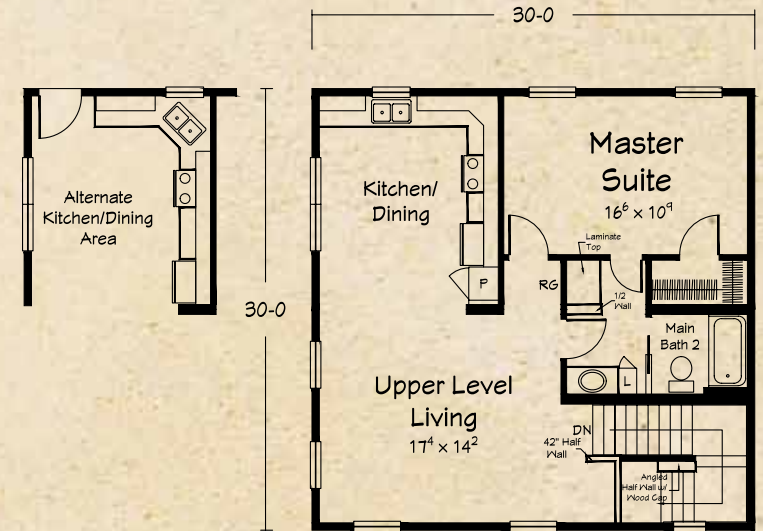


*Shown with site-built double porch.*

## the Salt Air III TWO STORY PLAN

*This "upside-down" two story plan has the main living areas on the second floor to maximize views. The compact plan leaves room for large front and rear porches or decks.*

### Salt Air III Second Floor

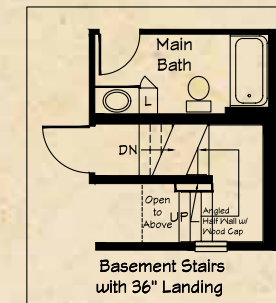
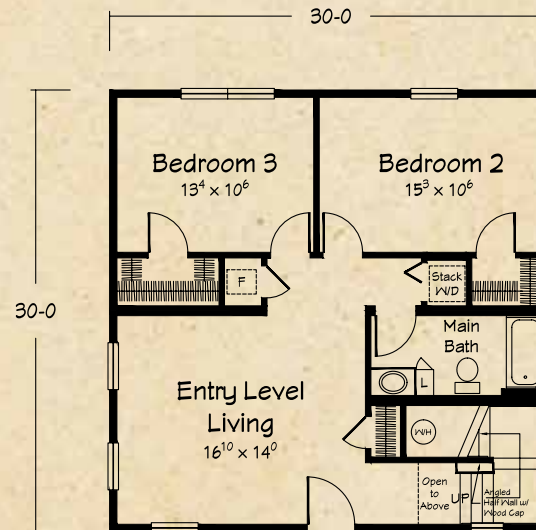


### Salt Air III First Floor

898 sq. ft. 1st Floor Living  
898 sq. ft. 2nd Floor Living

1796 Total Available

- 3 Bedrooms
- 2 Baths

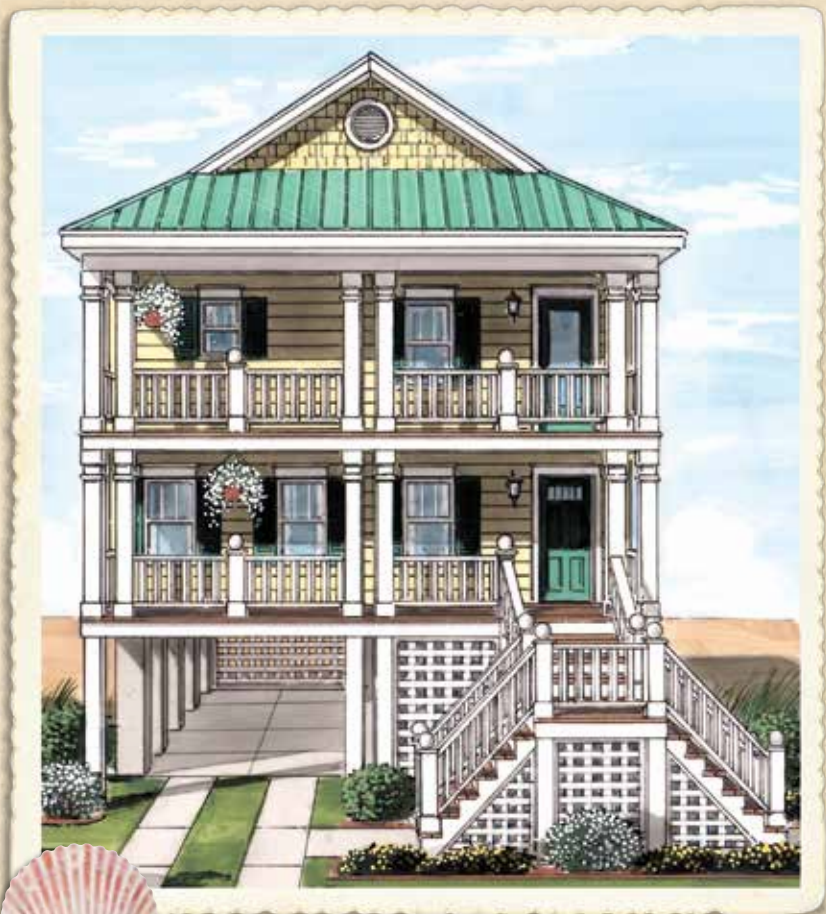


Floor plan exterior dimensions and interior room sizes are accurate, but may have been "rounded" for brochure plans. Always refer to Ritz Craft provided prints for actual dimensions.

F symbol denotes optional furnace/air handler location.

www.Ritz-Craft.com



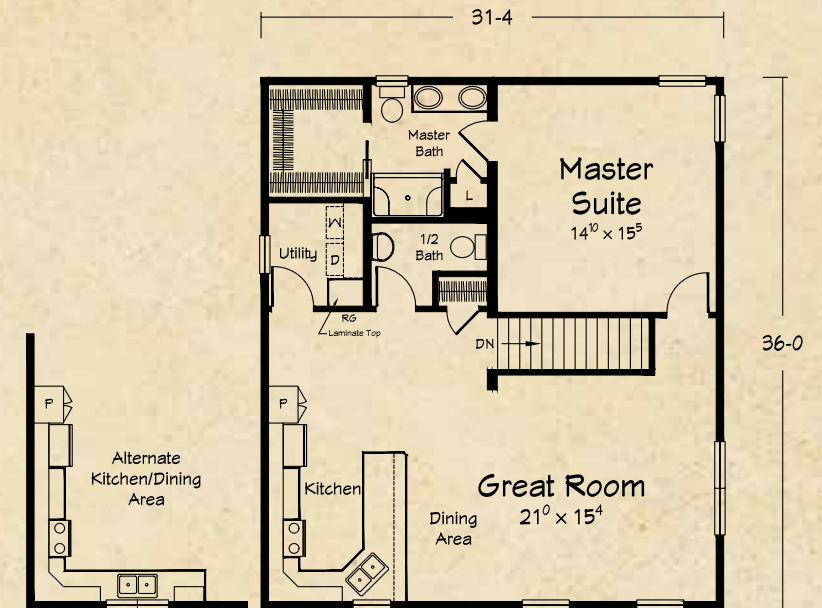


*Shown with site-built double porch.*

## the Sea Gull II TWO STORY PLAN

*This may be the perfect home for sites with a front porch view. By adding double-stacked front porches to this open plan you'll feel the breezes and see for miles.*

### Sea Gull II Second Floor

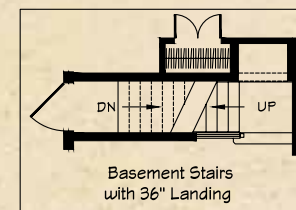
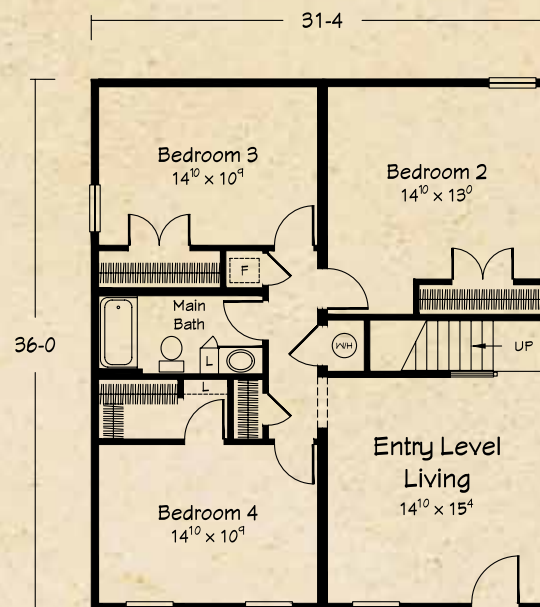


### Sea Gull II First Floor

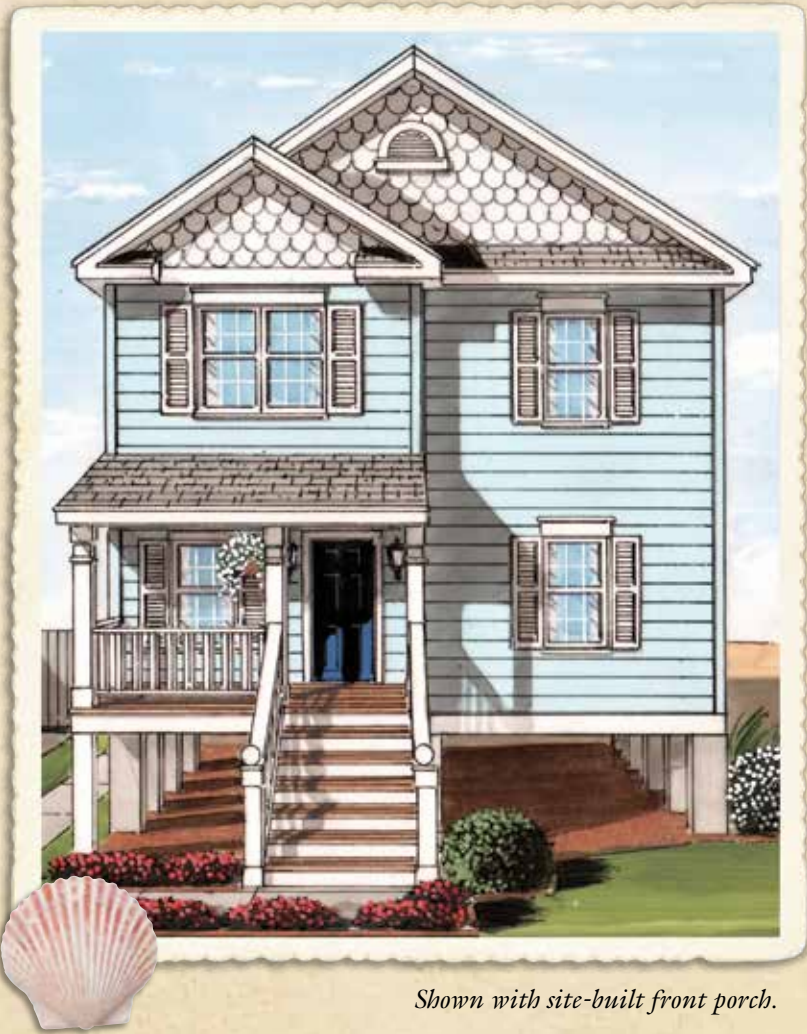
1128 sq. ft. 1st Floor Living  
1128 sq. ft. 2nd Floor Living  

---

2256 Total Available



- 4 Bedrooms
- 2½ Baths



*Shown with site-built front porch.*

## the Beach Haven III TWO STORY PLAN

*Nice upper level space includes kitchen/dining, great room and master suite for a "bird's eye view". Entry level bedrooms and baths are great for family and visiting friends.*

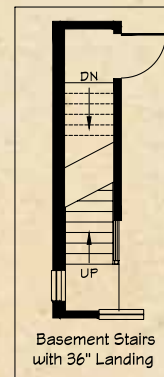
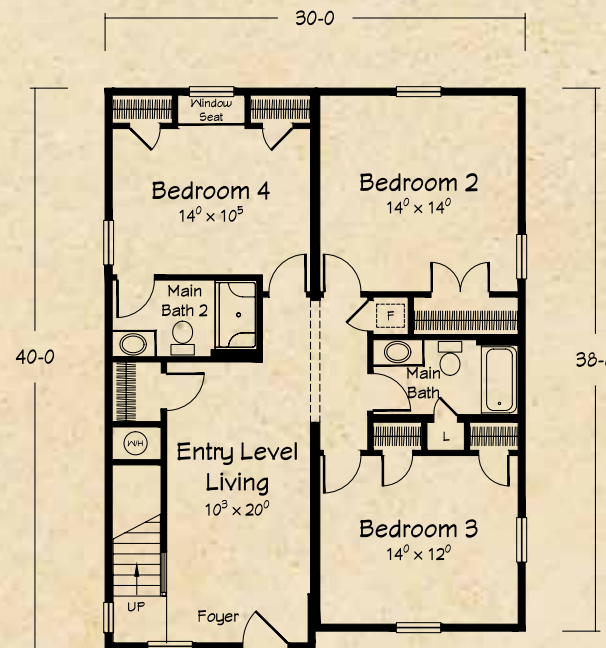
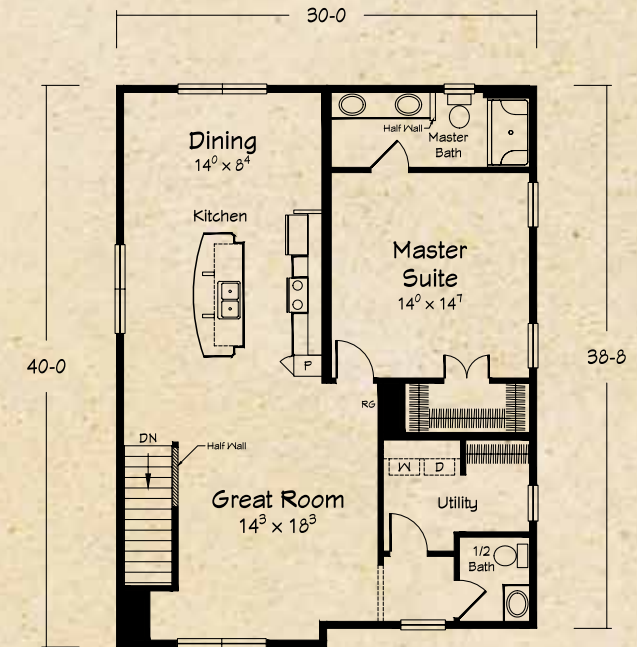
### Beach Haven III First Floor

1177 sq. ft. 1st Floor Living  
1177 sq. ft. 2nd Floor Living  

---

2354 Total Available

### Beach Haven III Second Floor



- 4 Bedrooms
- 3½ Baths

Floor plan exterior dimensions and interior room sizes are accurate, but may have been "rounded" for brochure plans. Always refer to Ritz Craft provided prints for actual dimensions.

F symbol denotes optional furnace/air handler location.

[www.Ritz-Craft.com](http://www.Ritz-Craft.com)



*Shown with site-built front porch.*

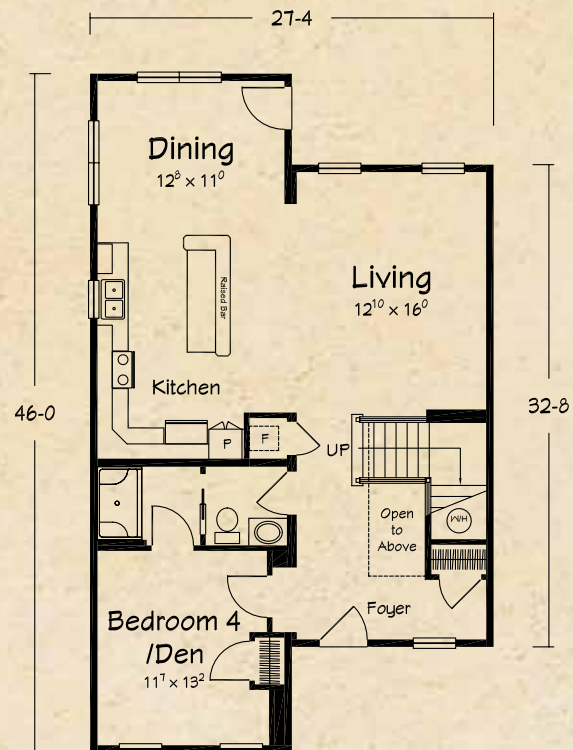
## the Summer Place II TWO STORY PLAN

*The perfect two story plan for enjoying views from the living/dining area, a rear deck or the elegant master suite. This spacious home plan will welcome your family and friends and be remembered as a place where their special memories began.*

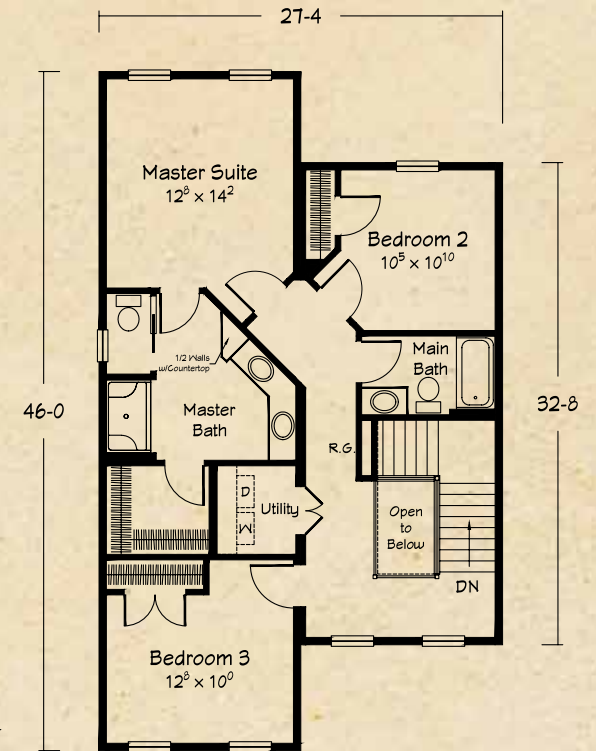
### Summer Place II First Floor

1075 sq. ft. 1st Floor Living  
1075 sq. ft. 2nd Floor Living

2232 Total Available



### Summer Place II Second Floor



- 3-4 Bedrooms
- 3 Baths

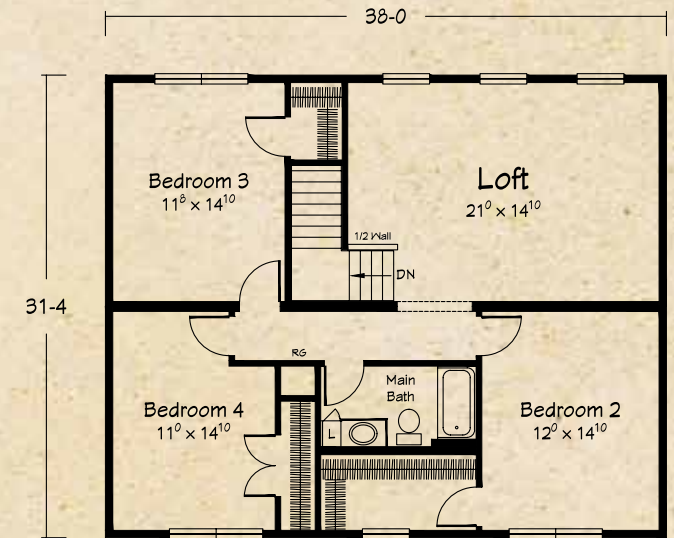


*Shown with optional hip roof and site-built front porch.*

## the Barnegat II TWO STORY PLAN

*The classic Barnegat plan features the master suite and living areas on the main level with good access to add a great rear deck. Three nice upper level bedrooms and a huge loft room round out the plan.*

### Barnegat II Second Floor



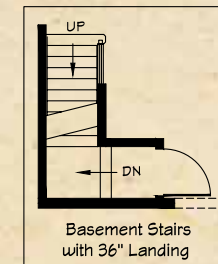
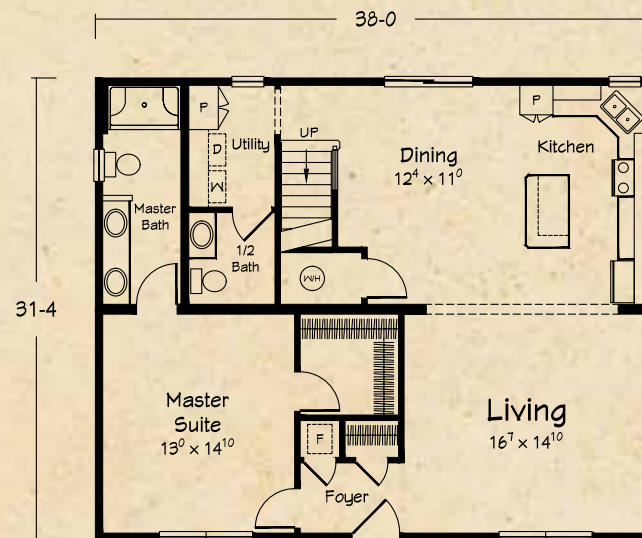
### Barnegat II First Floor

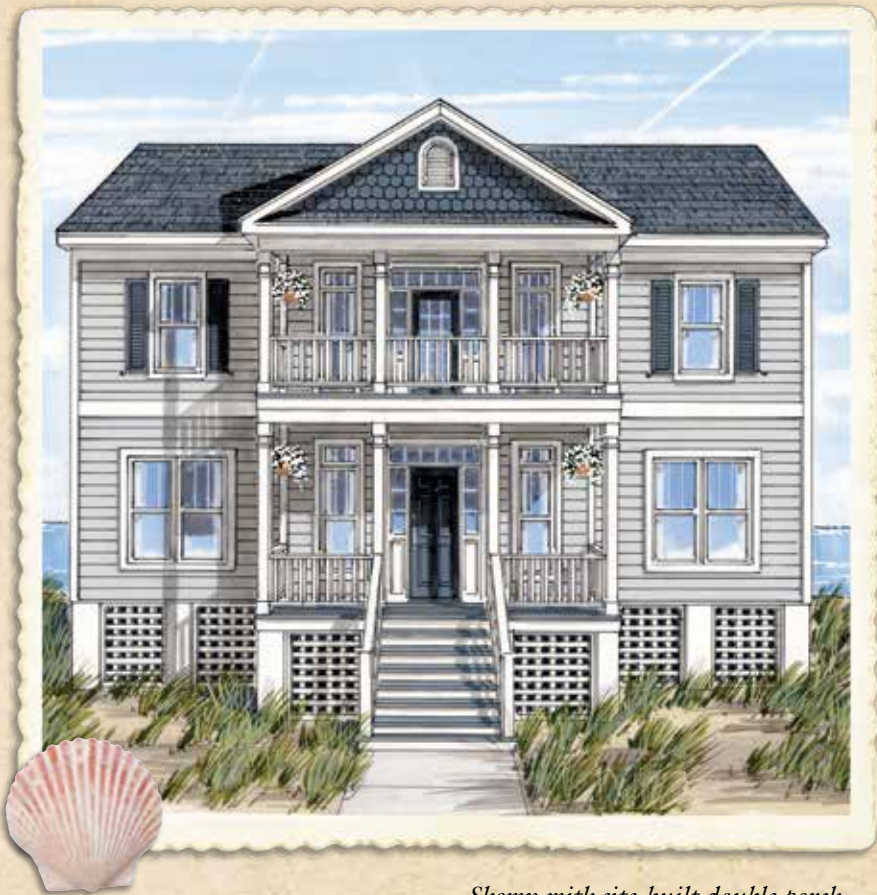
1191 sq. ft. 1st Floor Living  
1191 sq. ft. 2nd Floor Living  

---

2382 Total Available

- 4 Bedrooms
- 2½ Baths



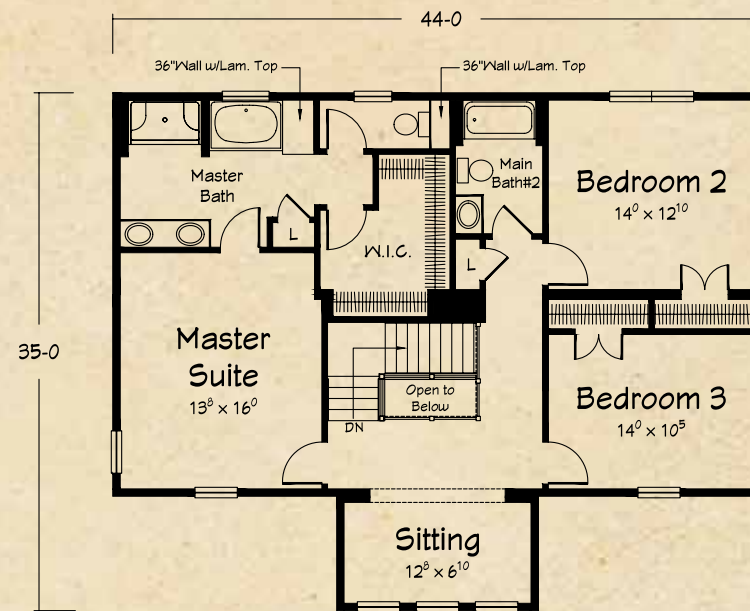


Shown with site-built double porch.

## the Crown Pointe II TWO STORY PLAN

The classy Crown Pointe's front tower provides perfect opportunity to tie in your single story or double stacked porch. The main level features lots of open living space and the upper level has three bedrooms including a great master suite.

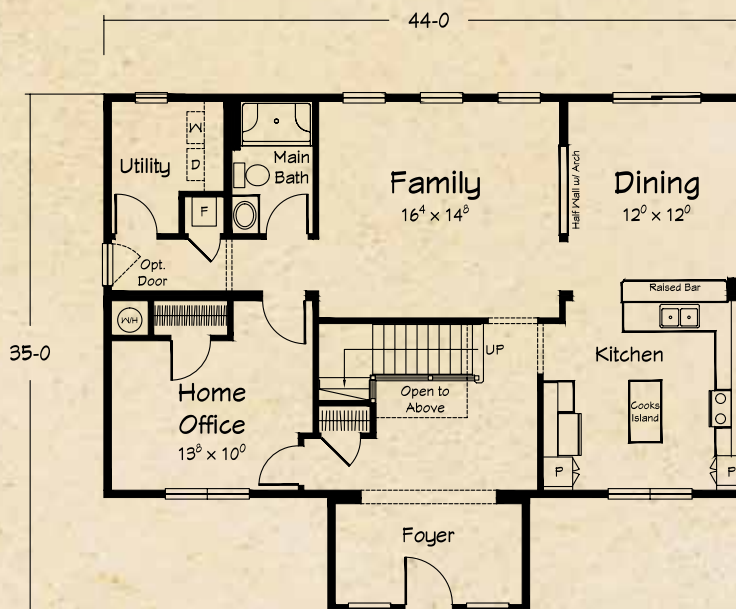
### Crown Pointe II Second Floor



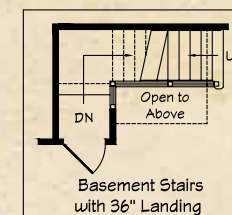
### Crown Pointe II First Floor

1309 sq. ft. 1st Floor Living  
1309 sq. ft. 2nd Floor Living

2618 Total Available



- 3-4 Bedrooms
- 2½ Baths





Shown with site-built front porch.

# the Buena Vista II TWO STORY PLAN

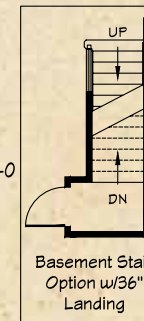
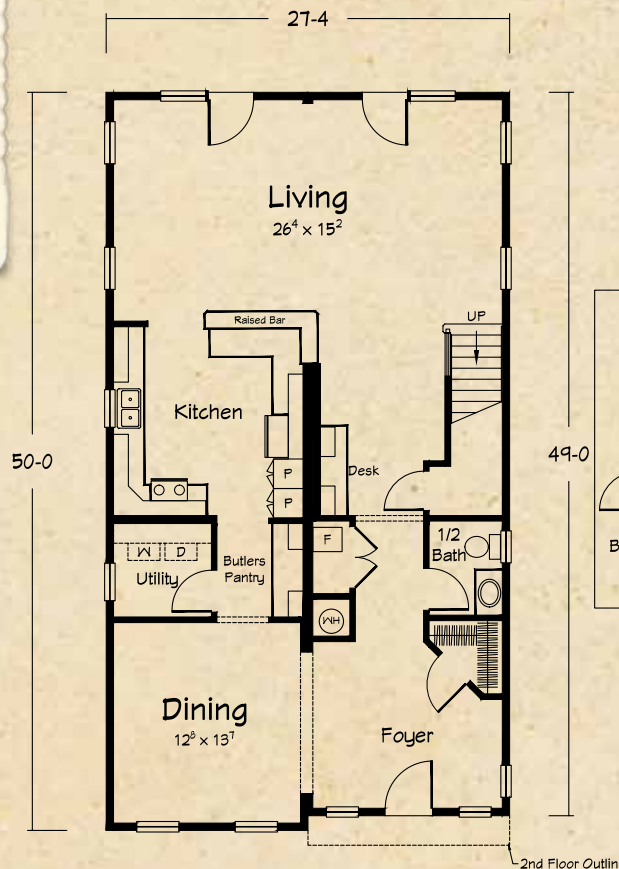
The beautifully open floor plan of the Buena Vista is designed to provide spectacular views from the rear facing living and master suite areas. This large family home is spacious and elegant.

## Buena Vista II First Floor

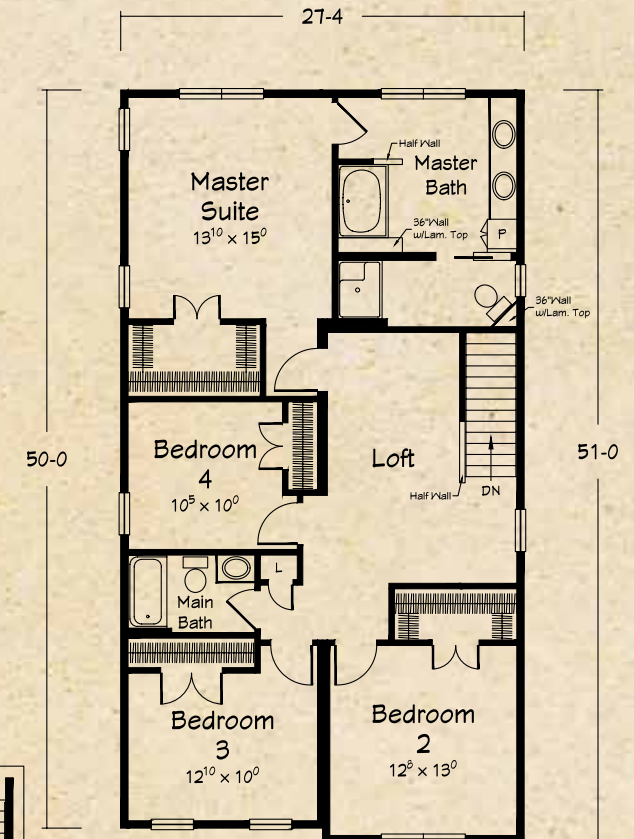
1353 sq. ft. 1st Floor Living  
1380 sq. ft. 2nd Floor Living  

---

2733 Total Available



## Buena Vista II Second Floor



- 4 Bedrooms
- 2½ Baths

# About Ritz-Craft Custom Homes

Founded in 1954, and still family owned and operated, Ritz-Craft specializes in “system built homes” that are custom built off-site in one of five climate controlled facilities. The components are then transported to the site, installed on the foundation and completed by your selected approved Ritz-Craft builder.

Ritz-Craft home plans offer wide variety and are designed to embrace each region’s architecture while offering many aesthetically pleasing and functional features. Building your new home with Ritz-Craft’s custom designed modules offers many advantages over conventional “stick by stick” site assembly. Our precision construction methods take place under roof in well lighted, climate controlled and efficient workstations that allow high quality and high efficiency. In fact, our quality assurance process includes code compliance inspections by a state licensed third party agency and over twenty-five key inspection checkpoints monitored by our in-house Quality Assurance Team. Ritz-Craft also utilizes many Green Friendly materials and processes to save energy, recycle materials, and to manage waste in an environmentally responsible manner.

When you choose Ritz-Craft, you’re selecting an experienced company with a commitment to quality and to the future. We have grown from a modest one-plant operation into a thriving enterprise with over one million square feet of climate controlled production space in five modern, highly mechanized plants. Some people ask if our homes are built as well as a site built home....and our proud reply is “yes, --- as well, and in many respects, better.” We say that with confidence knowing our process simply cannot be matched with in-field home building methods.

We’re proud of our custom built single story, Cape Cod style, and two story homes and we sincerely thank you for considering Ritz-Craft for your next home.



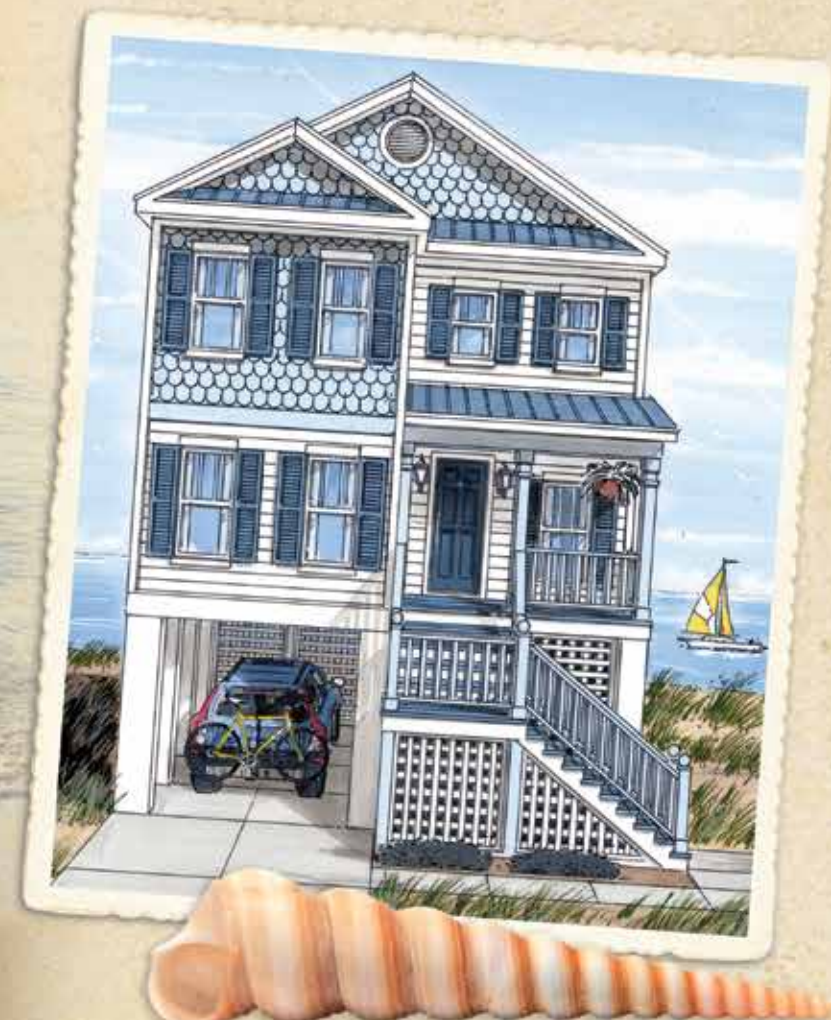
*Paul D. John, President/CEO  
Eric John, Vice President*



## Ritz-Craft Family of Companies

Our family of companies also includes Ritz-Trans, Legacy Crafted Cabinets and Legacy Building Products.





*Your approved  
Ritz-Craft  
Homebuilder:*

*Approved homebuilders are independent business entities and are not agents of Ritz-Craft Corporation.*

Due to occasional updating of building codes and Ritz-Craft's continuous product improvement, specifications are subject to change without prior notification. Be sure to request a copy of current specifications from your selected homebuilder.

©2014 Ritz-Craft Corporation 040114

